

Assistant Referee Duties

Niagara Soccer Association
2013



Assistant Referee Duties

This presentation was produced by the NSA to review Assistant referee duties and signals as outlined in the Laws of the Game – 2012/2013.

It is best viewed in MS PowerPoint -
Slide show mode

Assistant Referee Duties – Law 6

Duties

Two assistant referees may be appointed whose duties, subject to the decision of the referee, are to indicate:

- when the whole of the ball leaves the field of play
- which team is entitled to a corner kick, goal kick or throw-in
- when a player may be penalised for being in an offside position
- when a substitution is requested
- when misconduct or any other incident occurs out of the view of the referee
- when offences have been committed whenever the assistant referees have a better view than the referee (this includes, in certain circumstances, offences committed in the penalty area)
- whether, at penalty kicks, the goalkeeper moves off the goal line before the ball is kicked and if the ball crosses the line

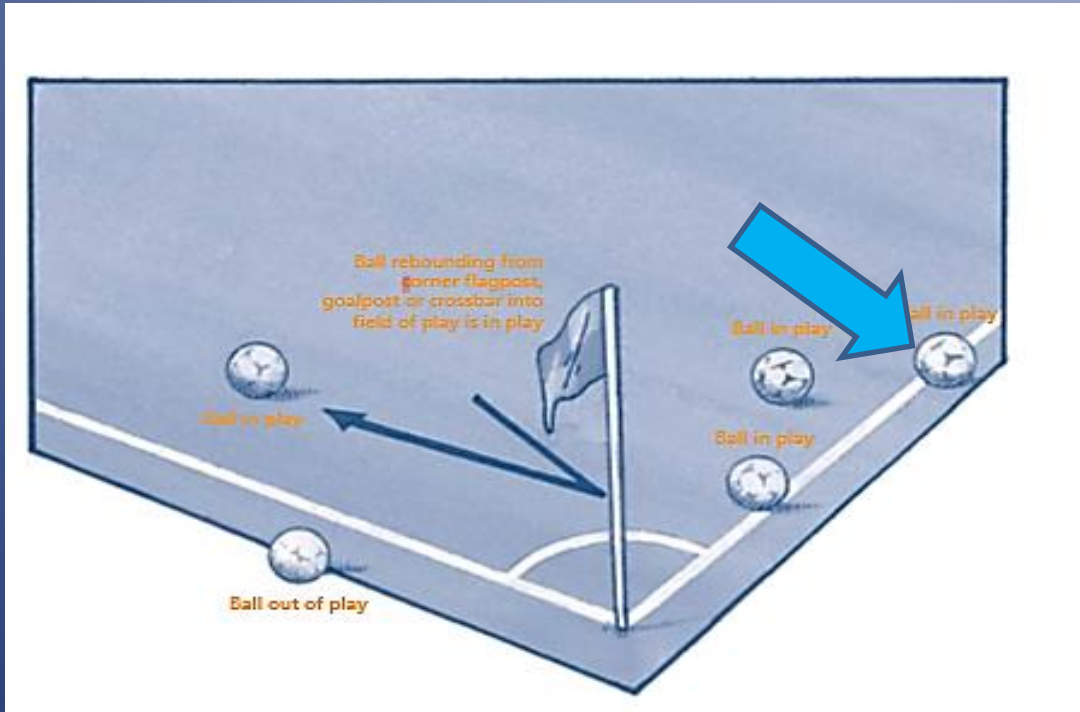
Additional Duties of an AR

Duties and responsibilities

The assistant referees help the referee to control the match in accordance with the Laws of the Game. They also assist the referee in all other matters involving the running of the match at the request and direction of the referee. This commonly includes such matters as:

- inspecting the field, the balls used and players' equipment
- determining if problems with equipment or bleeding have been resolved
- monitoring the substitution procedure
- maintaining back-up records of time, goals and misconduct

Ball out of Play – Law 9



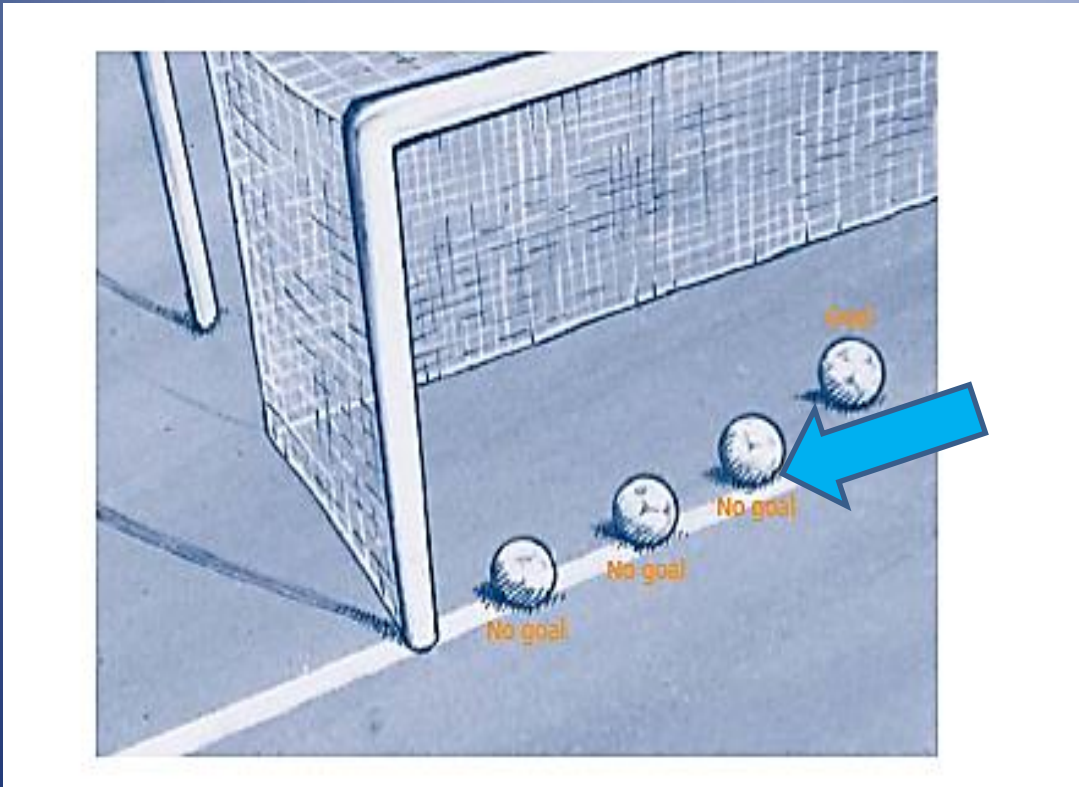
BLUE ARROW:

The AR must ensure that the whole ball has left the field, focusing attention on the back edge of the ball.

The Ball is out of play when:

- It has wholly crossed the goal line or touch line whether on the ground or in the air

Ball out of Play – Goal – Law 10



BLUE ARROW:

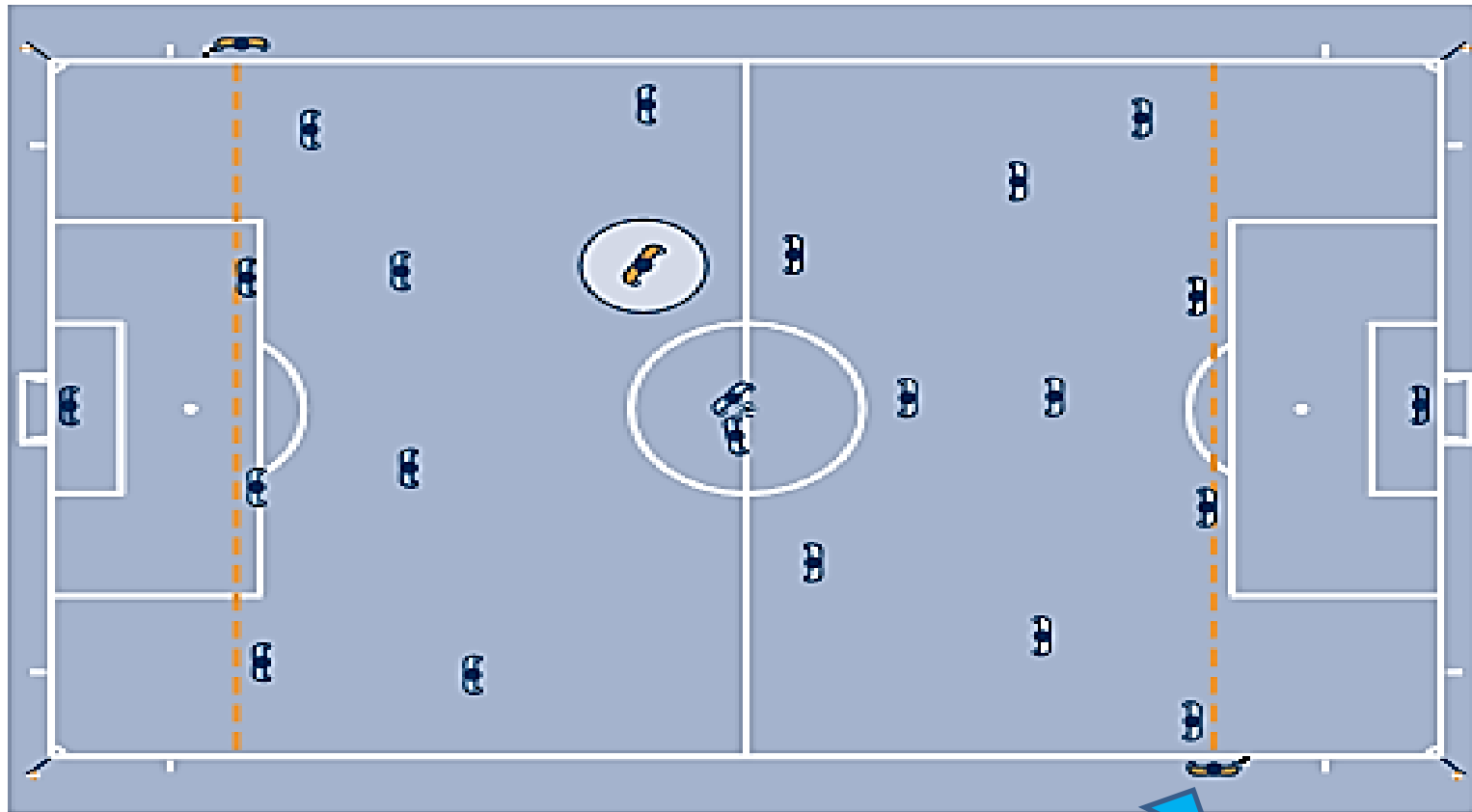
The AR must ensure that the whole ball entered the goal, focusing attention on the back edge of the ball.

A Goal is scored when the whole of the ball passes over the Goal line , between the goal posts and under the cross bar .

Positioning – Kick off

1. Kick-off

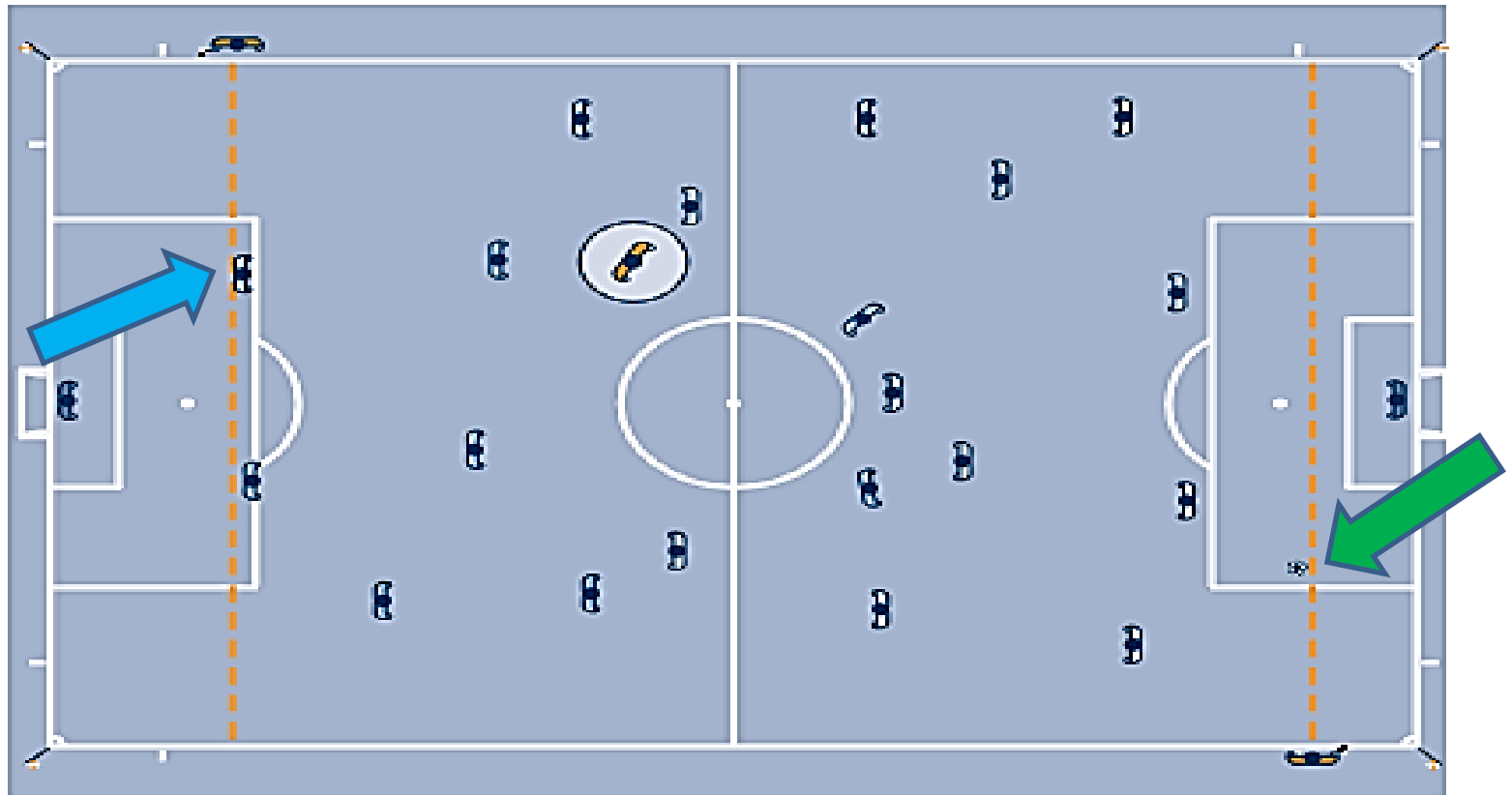
The assistant referees must be in line with the second-last opponent.



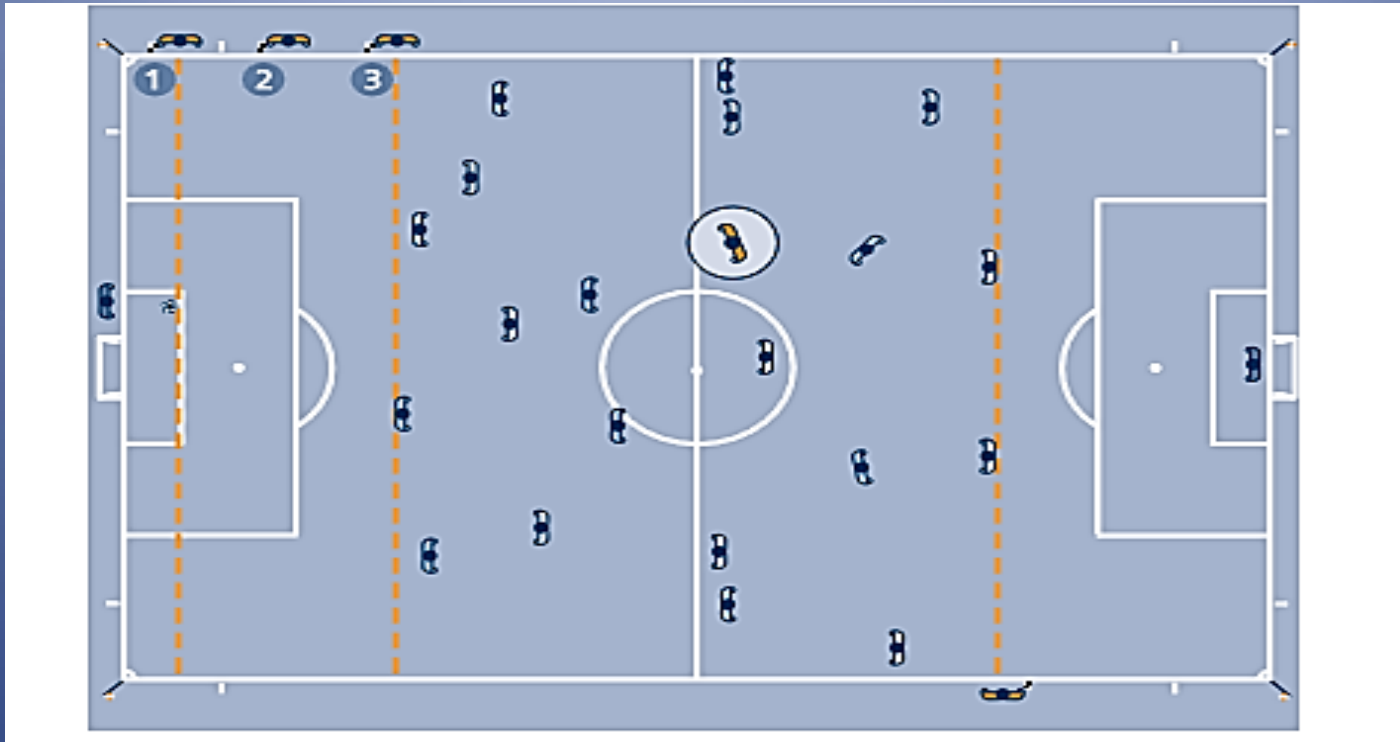
Active Play Positioning

2. General positioning during the match

The assistant referees must be in line with the second-last opponent or the ball if it is nearer the goal line than the second-last opponent. The assistant referees must always face the field of play.

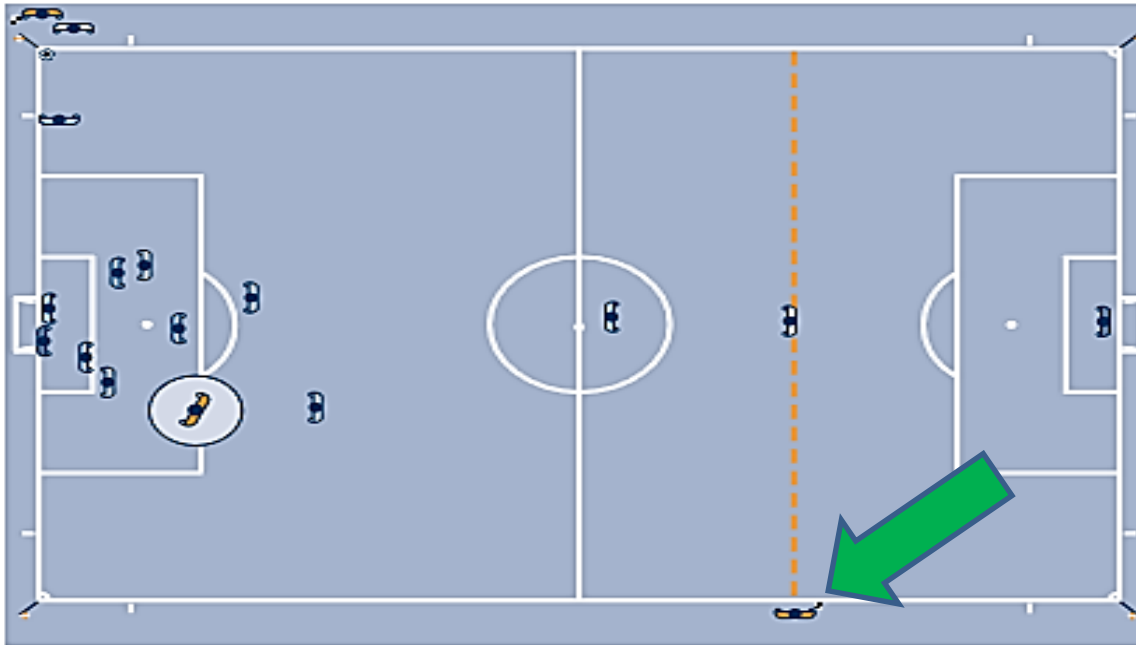


AR Positioning – Goal Kick



1. The AR must check first if the ball is inside the Goal area
2. Once the Ball is placed correctly, AR must move to the front edge of the penalty area to check that the ball leaves the penalty area and that the attackers are outside
3. After the ball is kicked and leaves the penalty area, the AR moves to the offside line

AR Positioning – Corner Kick



GREEN ARROW: The AR on the opposite side must watch players behind the referee's back as he is focused on the corner kick.

The AR position on a corner kick is behind the corner flag in line with the Goal line. The AR checks to see that the ball is properly placed inside the corner arc. In this position he must not interfere with the player taking the corner kick.

AR Positioning – Goal/No Goal

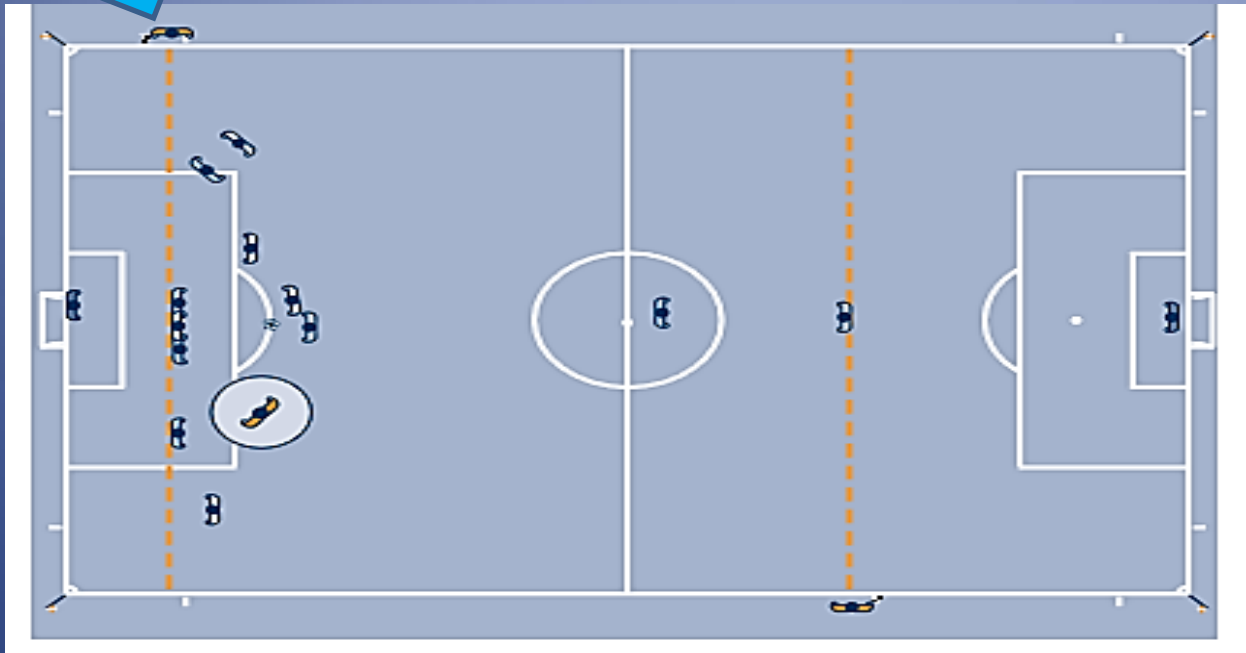


BLUE ARROW: If there is a close play and the AR decides a Goal is scored, first raise your flag, make eye contact with the referee.

GREEN ARROW: Once the Referee has agreed with the signal that a Goal was scored, flag down, run quickly up along the touch line towards centre.

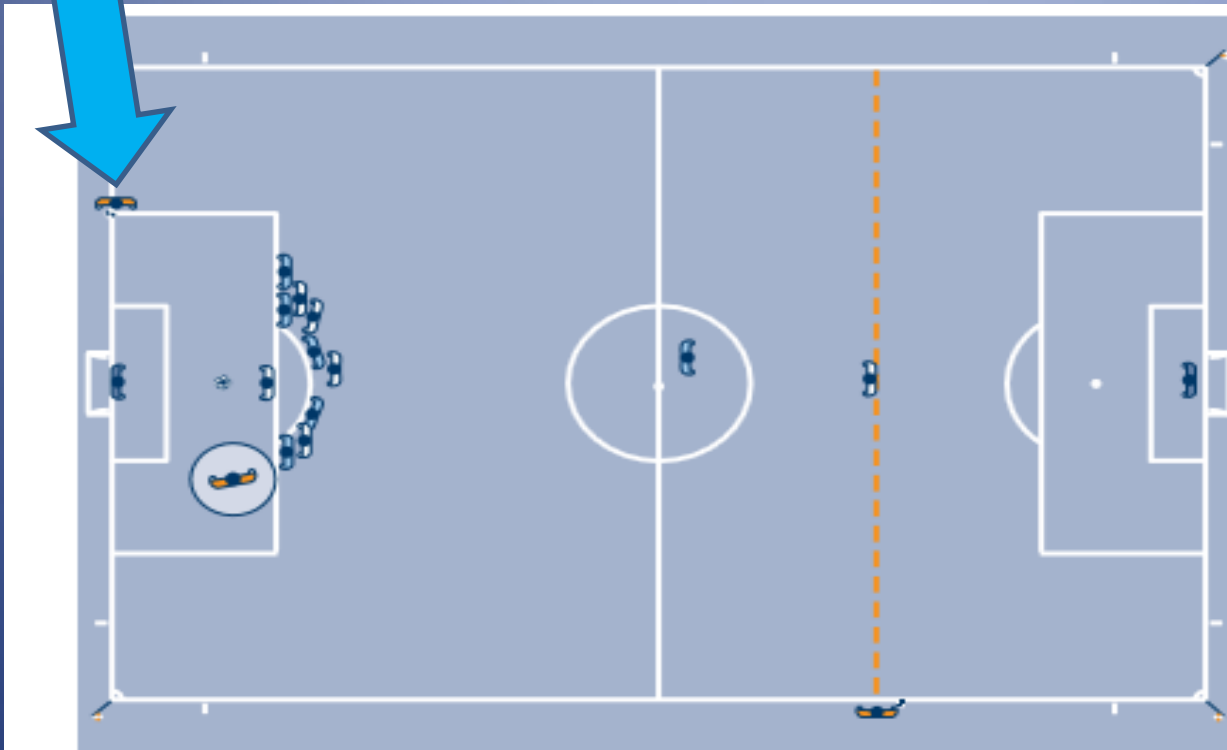
When a Goal is scored and there is no doubt about the decision, the AR makes eye contact with the referee and then must run quickly up the touch line towards centre. There is no need to raise the flag.

AR Positioning – Free Kick



The AR position is in line with the second last opponent to check for Offside. However, he must be ready to follow the ball by moving down the touch line towards the corner flag if there is a direct shot on Goal.

AR Positioning – Penalty Kick



BLUE ARROW:
Pre-game discussion
with the referee is
critical to make sure
everyone is clear on
their duties in case a
PK is awarded.

The AR must be positioned at the intersection of the Goal line and the Penalty area. If the goal keeper moves off the line before the ball is kicked and a goal is not scored the AR must raise his flag.

Flag Technique

Flag technique and team work

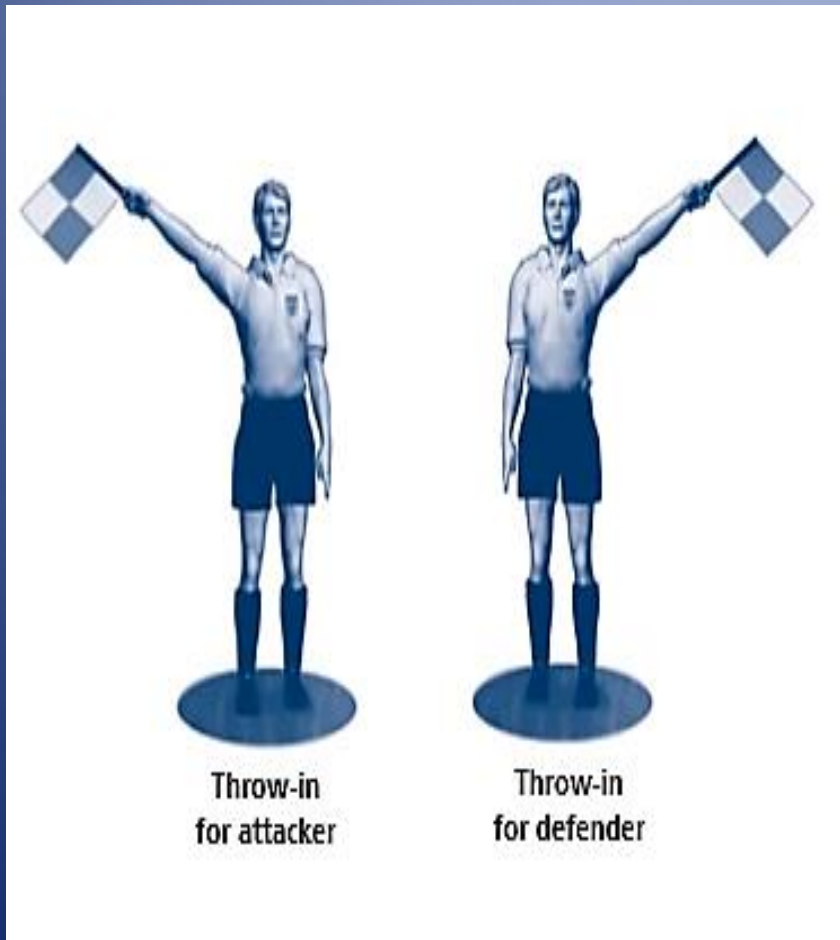
The assistant referee's flag must always be visible to the referee, unfurled and still whilst running.

When making a signal, the assistant referee must stop running, face the field of play, make eye contact with the referee and raise the flag with deliberate (not hasty or exaggerated) motions. The flag should be like an extension of the arm.

The assistant referees must raise the flag using the hand that will also be used for the next signal in a sequence. If circumstances change and the other hand must be used for the next signal, the assistant referee should move his flag to the opposite hand below the waist.

Whenever the assistant referee signals that the ball is out of play, he must continue to signal until the referee acknowledges it.

AR Signals – Throw in



After the Ball has left the field, AR stands stationary and faces the field making eye contact with the Referee. AR holds the signal until acknowledged by the Referee. If the Referee changes direction, the AR also changes and follows the Referee.

AR has straight arm at 45 degree angle

AR Signals – Corner Kick

AR first raises their flag to signal that the Ball has crossed the goal line, runs to the corner, stops 1 yard inside the corner flag, points the flag with a straight arm at 45 degree angle down towards the corner. Hold position and make eye contact with the Referee.



Corner kick

AR Signals – Goal Kick



Goal kick

If it is a close play, AR raises the flag straight up to signal that the ball has left the field – eye contact with Referee. Stand facing the field, hold flag in your right hand and point at 90 degrees towards the Goal area. Make eye contact with the Referee.

AR Signals - Substitution



Substitution

Usually AR1, when asked by either Coach, signals to the Referee that a team wants to substitute at a stoppage in play. Once, acknowledged by the Referee, the AR can lower their flag and monitor the substitution.

AR Signals - Foul



Step 1

Step 2

Two step procedure. Step 1, raise flag in the hand that will point direction, slight wave back and forth until signal accepted by the Referee. Step 2 - while making eye contact with the Referee point direction with straight arm at 45 degree angle.

AR Signals – Law 11

The NSA has produced a separate presentation dealing with AR duties and signals for Law 11 – Offside.

Please visit the Referee section of the NSA website:

www.niagarasoccerassociation.com

AR Duties and Signals

Produced by and for the
Niagara Soccer Association

Questions can be sent to the NSA
attention DRC.

2013 – LVB